

A graphic consisting of three thick, dark blue curved arrows arranged in a circle, pointing clockwise. The arrows are positioned around the central text, with one at the top, one on the right, and one at the bottom.

RecyClass

PLASTIC FUTURE
IS CIRCULAR

A large graphic of a recycling symbol, consisting of three curved arrows forming a triangle, is positioned on the left side of the slide. The arrows are a dark teal color. The word "RecyClass" is written in white, sans-serif font, oriented vertically across the center of the symbol.

RecyClass

RecyClass is a **non-profit**, cross-industry initiative advancing **recyclability**, bringing transparency to the origin of plastic waste and establishing a harmonised approach toward **recycled plastic** calculation in Europe.

RECYCLASS IN A NUTSHELL



SCIENCE-BASED DESIGN FOR RECYCLING GUIDELINES



STANDARDISED RECYCLABILITY METHODOLOGY & TESTING PROTOCOLS



FREE SELF-ASSESSMENT TOOL FOR PACKAGING RECYCLABILITY



RECYCLABILITY, RECYCLING PROCESS & RECYCLED PLASTICS CERTIFICATIONS



PAN-EUROPEAN APPROACH



VALUE CHAIN COLLABORATION



6 TECHNICAL COMMITTEES



7 TASKFORCES

Learn more about RecyClass on our website



OUR PILLARS



RECYCLABILITY

DESIGN MATTERS!

RecyClass accelerates the transition towards circular plastic products by developing science-based guidelines for recyclability.

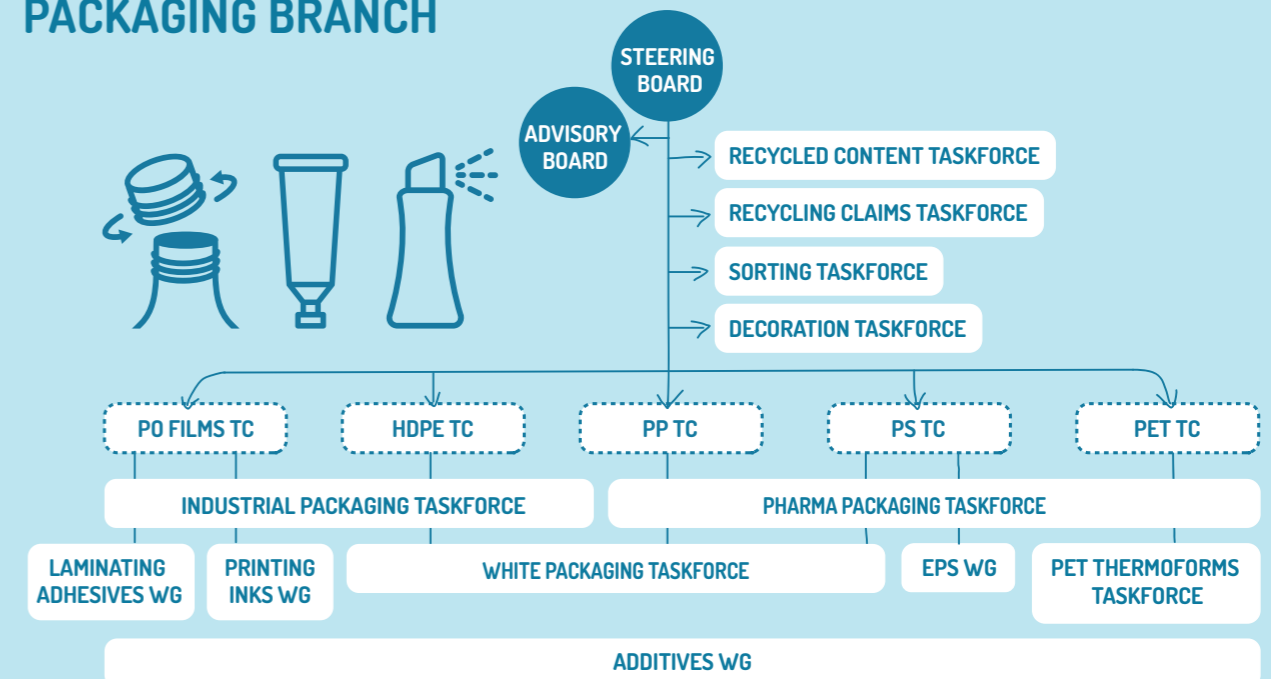


RECYCLED PLASTIC

TRACEABILITY, TRANSPARENCY, TRUST

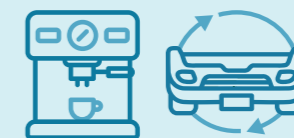
RecyClass promotes transparency in origin of waste & leads harmonisation in the calculation of recycled plastic content.

PACKAGING BRANCH



NEW BRANCH

AUTOMOTIVE AND ELECTRICAL & ELECTRONIC EQUIPMENT TC



Detailed overview of the structure can be found in the [RecyClass Internal Procedures](#)

OTHER ORGANISATIONS PART OF RECYCLASS

CERTIFICATION BODIES

TESTING FACILITIES

SUPPORTERS

CIRCULARITY IN PRACTICE

Based on a science-based approach, RecyClass drives the change toward plastic circularity. Through collaboration, RecyClass bridges the gap between plastic industry key players, ensuring that the expertise of recyclers is considered into product design to improve their recyclability and ensure traceable use of recycled materials.

TESTING PROTOCOLS

Test sorting and recycling processes of innovative packaging technologies using RecyClass Testing Protocols. The protocols consist of scientific & transparent laboratory procedures that replicate the European state-of-the-art recycling processes.

TECHNOLOGY APPROVALS

Technology Approvals are issued for innovative technologies following positive test results in line with RecyClass Recyclability Evaluation Protocols.

DESIGN FOR RECYCLING GUIDELINES

Check the most up-to-date recommendations to design recyclable packaging for the following plastic streams:

- PET bottles
- PET thermoforms
- HDPE, PP containers
- PE, PP films
- PS containers
- EPS fish boxes & white goods
- HDPE, PP crates & pallets

RECYCLASS CERTIFICATIONS

Certify your plastic product recyclability, plastic recycling processes or the use of recycled plastic in products. RecyClass Certification Schemes are:

- RecyClass Recyclability Certification
- RecyClass Recycling Process Certification
- RecyClass Recycled Plastics Traceability Certification

RECYCLASS ONLINE TOOL

Self-assess the recyclability of your packaging and receive guidance on how to improve it for free with [RecyClass Online Tool](#).



GET CERTIFIED



RECYCLABILITY CERTIFICATION

The RecyClass Recyclability Certification evaluates the compatibility of plastic packaging with the entire waste management chain, which includes collection, sorting, recycling, and the ability of the recycled material to be reused in its original application.



RECYCLING PROCESS CERTIFICATION

The RecyClass Recycling Process Certification aims at recognising plastic recycling process/es for pre-consumer and post-consumer waste operating at a site. This certification allows recyclers to demonstrate the traceability of plastics recycling and transparently communicate the origin of the waste. The Audit Scheme was developed in line with the EN 15343 standard.



RECYCLED PLASTICS TRACEABILITY CERTIFICATION

The RecyClass Recycled Plastics Traceability Certification focuses on the traceability of recycled plastics within a process and the verification of a given percentage of recycled plastic content in products. The Audit Scheme was developed in line with the EN 15343 standard.

✓ All audits are conducted by recognised third-party Certification Bodies that issue respective certificates.

MEMBERSHIP BENEFITS



ADVISORY BOARD

RESERVED SEAT IN RECYCLASS ADVISORY BOARD

Participation to the RecyClass Advisory Board meetings where members discuss future trends and possible developments of RecyClass. The Chair of the Advisory Board and 4 additional representatives participate in RecyClass Steering Board.



TECHNICAL COMMITTEES

Eligibility to participate in one or more RecyClass Technical Committees where technical reviews and technology assessments are conducted.



TASKFORCES

Eligibility to participate in one or more RecyClass Taskforces working on specific topics like recycled plastics, circular claims, decoration or sorting.



CERTIFICATIONS

RECYCLABILITY, RECYCLING PROCESS AND/OR RECYCLED PLASTICS TRACEABILITY CERTIFICATION BY A THIRD-PARTY CERTIFICATION BODY

Offered certification management fee is limited to 1 for Bronze members, 3 for Gold and 5 for Platinum members, per year. For all conditions, view the documentation of individual audit schemes.

This applies to all RecyClass Certifications.



TECHNOLOGY APPROVALS

ASSESSED BY THE RECYCLASS TECHNICAL COMMITTEES

The results of the testing, based on the RecyClass Recyclability Evaluation Protocols are evaluated by the RecyClass Technical Committees.



TRAINING PROGRAMME

CUSTOMISED HALF-DAY TRAINING

The training can cover topics, such as recycling technologies installed in Europe, main technological challenges faced by the recyclers, how product design can influence sorting and recycling processes, an analysis and discussion of a company's packaging portfolio, and a general Q&A session for all participants. The content of the training can be adapted to specific needs of the company upon previous agreement.



RECYCLING POLICY REPORT

ANALYSIS AND ASSESSMENT OF YOUR RECYCLING POLICY

RecyClass experts can support in the development of a recycling policy or provide recommendations for adapting an existing policy in line with current trends in recycling.



SUPPORT FROM THE RECYCLASS TEAM

Assistance to members on recyclability & recycled content-related matters.



COMPANY EXPOSURE

Exposure of company logo across different RecyClass communication channels & events.

MEMBERSHIP FEES

RecyClass activities are divided into two branches: Packaging and Automotive & EEE. Based on their interests, companies can participate in one branch or both. The total annual membership fee will be determined based on the level chosen for each branch.

BRONZE 3.000 € annually	GOLD 5.000 € annually	PLATINUM 10.000 € annually
✓ SUPPORT VIA EMAIL	✓ SUPPORT VIA EMAIL	✓ SUPPORT VIA EMAIL
✓ CERTIFICATION FEE* 1 free per year	✓ CERTIFICATION FEE* 3 free per year	✓ CERTIFICATION FEE* 5 free per year
✓ COMPANY EXPOSURE	✓ COMPANY EXPOSURE	✓ COMPANY EXPOSURE
✓ RECYCLASS TASKFORCES	✓ RECYCLASS TASKFORCES	✓ RECYCLASS TASKFORCES
✗ RECYCLASS ADVISORY BOARD	✗ RECYCLASS ADVISORY BOARD	✓ RECYCLASS ADVISORY BOARD
✗ RECYCLASS TECHNICAL COMMITTEES	✗ RECYCLASS TECHNICAL COMMITTEES	✓ RECYCLASS TECHNICAL COMMITTEES
✗ RECYCLING POLICY REPORT	✗ RECYCLING POLICY REPORT	✓ RECYCLING POLICY REPORT
✗ TRAINING PROGRAMME	✗ TRAINING PROGRAMME	✓ TRAINING PROGRAMME

*Includes management fee. Laboratory testing and audit costs are not included.

ADMISSION PROCEDURE

ELIGIBILITY CRITERIA

RecyClass membership is open to all actors of the plastic value chain who are interested in advancing plastic recyclability and the uptake of recycled plastic.

More information on eligibility can be found in the [RecyClass Internal Procedures](#).



HOW TO APPLY?

Fill in the online application form. By submitting the form, you agree to the procedures as described in the RecyClass Internal Procedures.



WHAT HAPPENS NEXT?

If your application meets the required conditions, your application will be submitted for approval to the RecyClass Steering Board. The applicant will be kept informed throughout the process, and if approved, will be granted access to membership resources.

IN CASE OF ANY QUESTIONS, CONTACT INFO@RECYCLASS.EU

RecyClass

Avenue de Broqueville 12
1150 Brussels - Belgium

Phone: +32 2 786 39 08
info@recyclass.eu

WWW.RECYCLASS.EU