

# RecyClass

## RECYCLABILITY EVALUATION PROTOCOL

### FOR PE FILMS

STANDARD LABORATORY PRACTICE

REP-PEflex-01

## CONTENT

CONTENT .....	2
GLOSSARY .....	3
1. INTRODUCTION AND PURPOSE OF THE PROTOCOL .....	5
2. SCOPE OF THE PROTOCOL .....	6
3. DISCLAIMER .....	6
4. LABORATORY TEST METHODOLOGY .....	6
4.1 CONTROL SAMPLE SELECTION .....	8
4.2 VIRGIN SAMPLE SELECTION .....	8
5. LABORATORY TEST PROCEDURES .....	9
5.1 PRE-TREATMENT STEPS .....	9
5.1.1 GRINDING .....	9
5.1.2 WASHING .....	9
5.1.3 FLOTATION TEST .....	9
5.1.4 DRYING .....	10
5.2 EXTRUSION .....	11
5.2.1 FLAKE BLENDS PREPARATION .....	11
5.2.2 FLAKE BLENDS COMPOSITION .....	11
5.2.3 PELLET PRODUCTION .....	12
5.3 CONVERSION .....	14
5.3.1 PELLET BLENDS PREPARATION .....	14
5.3.2 PELLET BLENDS COMPOSITION .....	15
5.3.3 BLOWN FILM PRODUCTION .....	15
DOCUMENT VERSION HISTORY .....	18
ANNEX I – CONTROL & VIRGIN SAMPLES SELECTION .....	19
ANNEX II – MASS BALANCE FOR PRE-TREATMENT STEPS .....	19
ANNEX III – PE FILM SURFACE IMPRESSION EVALUATION AND IMPURITY VISUAL INSPECTION .....	20

## GLOSSARY

<b>A.0</b>	100 % control film flakes
<b>A.25</b>	Blend 75/25 control/innovation flakes
<b>A.50</b>	Blend 50/50 control/innovation flakes
<b>A.100</b>	Blend 100 % innovation film flakes
<b>ASTM</b>	American Society for Testing and Materials
<b>B.0</b>	Film made of 50 % of virgin pellets and 50 % of B.0 pellets
<b>B.25</b>	Film made of 50 % of virgin pellets and 50 % of B.25 pellets
<b>B.50</b>	Film made of 50 % of virgin pellets and 50 % of B.50 pellets
<b>B.100</b>	Film made of 50 % of virgin pellets and 50 % of B.100 pellets
<b>Control Sample</b>	Plain PE film (or PE resin that has already been thermally processed once) used as benchmark
<b>EN</b>	European Standard
<b>Innovation Sample</b>	Film containing the innovative technology
<b>ISO</b>	International Organization for Standardization
<b>MFI</b>	Melt Flow Index
<b>PE</b>	Polyethylene
<b>PP</b>	Polypropylene
<b>PVC</b>	Polyvinyl Chloride
<b>TC</b>	Technical Committee
<b>TGA</b>	Thermogravimetric Analysis
<b>Virgin Material</b>	PE resin that will for the first time be converted to a plastic product (no thermal pre-treatment)
<b>wt%</b>	Weight Percentage

# RecyClass

## DISCLAIMER

“RecyClass is a non-profit, cross-industry initiative advancing recyclability, bringing transparency to the origin of plastic waste and establishing a harmonized approach toward recycled plastic calculation & traceability in Europe. The Recyclability Evaluation Protocols will promote recyclability by encouraging the industry to test new plastic technologies, materials or products, providing recommendations on improving their recyclability before market launch.

The Recyclability Evaluation Protocols are freely available to download on the [RecyClass website](#). Companies developing new plastic concepts are encouraged to use them to self-assess the impact of their solutions on recyclability and highlight potential issues. **However, compliance with a Recyclability Evaluation Protocol is not a replacement for an official assessment and may not be used as a marketing tool.** The RecyClass Steering Board, following the recommendations of the Technical Committees, will decide on the compatibility of the innovation with recycling according to the evaluation results, granting a Recyclability Approval Letter to the Applicant.

All tests must follow the Evaluation Protocols recommended by the RecyClass Technical Committees and be conducted by an independent laboratory recognised by RecyClass which has no legal affiliation to the applicant.

More information is reported in the RecyClass Internal Procedures available on the [RecyClass website](#).

## 1. INTRODUCTION AND PURPOSE OF THE PROTOCOL

The “RecyClass<sup>1</sup> Recyclability Evaluation Protocol for PE Films” referred to in this document as “The Protocol” describes the methodology the applicant must follow at a laboratory scale to determine if a plastic packaging innovation is compatible with the post-consumer PE film recycling stream. The Protocol targets companies responsible for introducing a packaging product onto the market. The applicant shall proceed with the Protocol as established in the Assessment Process for Applicants of Recyclability Evaluation in the RecyClass Internal Procedures<sup>2</sup> and “RecyClass Recyclability Approval Quality Management & Procedures document<sup>3</sup>”

The Protocol analyses whether an innovation will undergo the necessary pre-treatment, extrusion and conversion steps described in this methodology at a laboratory scale without negatively impacting the recycling process and the quality of the recycled PE, tested in a PE flexible application as a reference. It aims to prove the recyclability<sup>4</sup> of plastics packaging while encouraging innovation in the PE film market. The overall goal is to maintain the protection of packaged goods and their marketing display functions without obstructing the proper functioning of the PE film recycling process and ensuring the highest possible quality of the recycled polymer, tested in a PE film application as a benchmark.

This document provides guidance on the testing methodology that shall be followed, including benchmark recommendations to guide the interpretation of the results.

PE film terminology, as it is used in this document, is defined as a flexible plastic whose form changes depending on whether it is filled with a substance or not. It has a thickness of up to 250 µm and at least 90 % of its weight is plastic, with up to 10 % of closely bonded or impregnated material. Printing, coatings, or plastic fillers can classify as closely bonded or impregnated materials.

Please note that all units in this protocol are expressed following the International System of Units<sup>5</sup>, from the Bureau International des Poids et Mesures.

---

*1 RecyClass assesses the recyclability of a plastic package providing a ranking from A to F. RecyClass also provides specific indications and recommendations on how to improve packaging design to fit current recycling technologies. More information at <https://recyclass.eu/>*

*<sup>2</sup> [RecyClass Internal Procedures](#)*

*<sup>3</sup> [RecyClass Recyclability Approval Quality Management & Procedures](#)*

*4 Recyclability definition according to PRE & APR: Plastics must meet four conditions for a product to be considered recyclable: 1. The product must be made with a plastic that is collected for recycling, has market value and/or is supported by a legislatively mandated program. 2. The product must be sorted and aggregated into defined streams for recycling processes. 3. The product can be processed and reclaimed/recycled with commercial recycling processes. 4. The recycled plastic becomes a raw material that is used in the production of new products.*

*<sup>5</sup> [SI Brochure - BIPM](#)*

## 2. SCOPE OF THE PROTOCOL

The scope of the Protocol covers any innovation introduced to the existing packaging solutions for PE films. Before initiating the evaluation, the applicant shall review the Design for Recycling Guidelines for clear or coloured PE films<sup>1</sup> to confirm that the PE innovation film is compatible with the recycling stream for PE films.

The following packaging solutions and/or innovations are covered by the scope of this Protocol:

- Non-PE layers and coatings, including PP, nylon, EVOH, and others not specified.
- Rigid PE and non-PE attachments to the PE film tested packaging.
- Mineral fillers and other additives that alter the density of PE film.
- Paper and filmic labels
- Inks and pigments, including direct, reverse, laminated, and other printing technologies.
- Compatibilizers and other additives (impact improvers, nucleating agents, etc.) not otherwise specified.
- Adhesives

Following the RecyClass recyclability Methodology<sup>2</sup>, packaging containing aluminium layer, metal, bio/oxo-degradable plastics, black carbon surface, as well as PVC, PVDC and PET layers are considered disqualifying criteria for PE films recyclability. Consequently, packaging containing one of these features do not fall under the scope of this Protocol.

## 3. DISCLAIMER

The Protocol is created to represent as accurately as possible how the actual PE recycling process works at an industrial scale. RecyClass Technical Committee reserves the right for further testing, if necessary, to issue a final opinion on the recyclability of the tested innovation. The Recyclability Evaluation Protocol establish some benchmark recommendations to guide the decision-making process. However, only some of the properties listed in the protocol are provided with a benchmark recommendation, given that the evaluation is also based on the technical expertise of the Technical Committee (TC).

Furthermore, within RecyClass, “easy-to-empty” and “easy-to-access” indexes are essential factors when considering the recyclability of a package. Washing operations at state-of-the-art PE films mechanical recycling facility uses mild conditions and no detergents or strong chemicals. Consequently, any food or product residue constitutes an impurity for the recycling stream. RecyClass encourages testing to verify that the package is “easy-to-empty” and therefore ensures the minimum amount of residue material at the end of its useful life. Nonetheless, this factor is beyond the scope of this Protocol.

## 4. LABORATORY TESTING METHODOLOGY

This methodology aims to reproduce the recycling process at a laboratory scale to determine the suitability of an innovation for the PE film recycling stream. The methodology described below shall be followed precisely and any modifications or problems during the testing phase must be noted. The PO films TC may request additional tests in specific cases where supplementary data might be needed for a complete evaluation. A Laboratory Evaluation Report

---

<sup>1</sup> [Design for Recycling Guidelines](#)

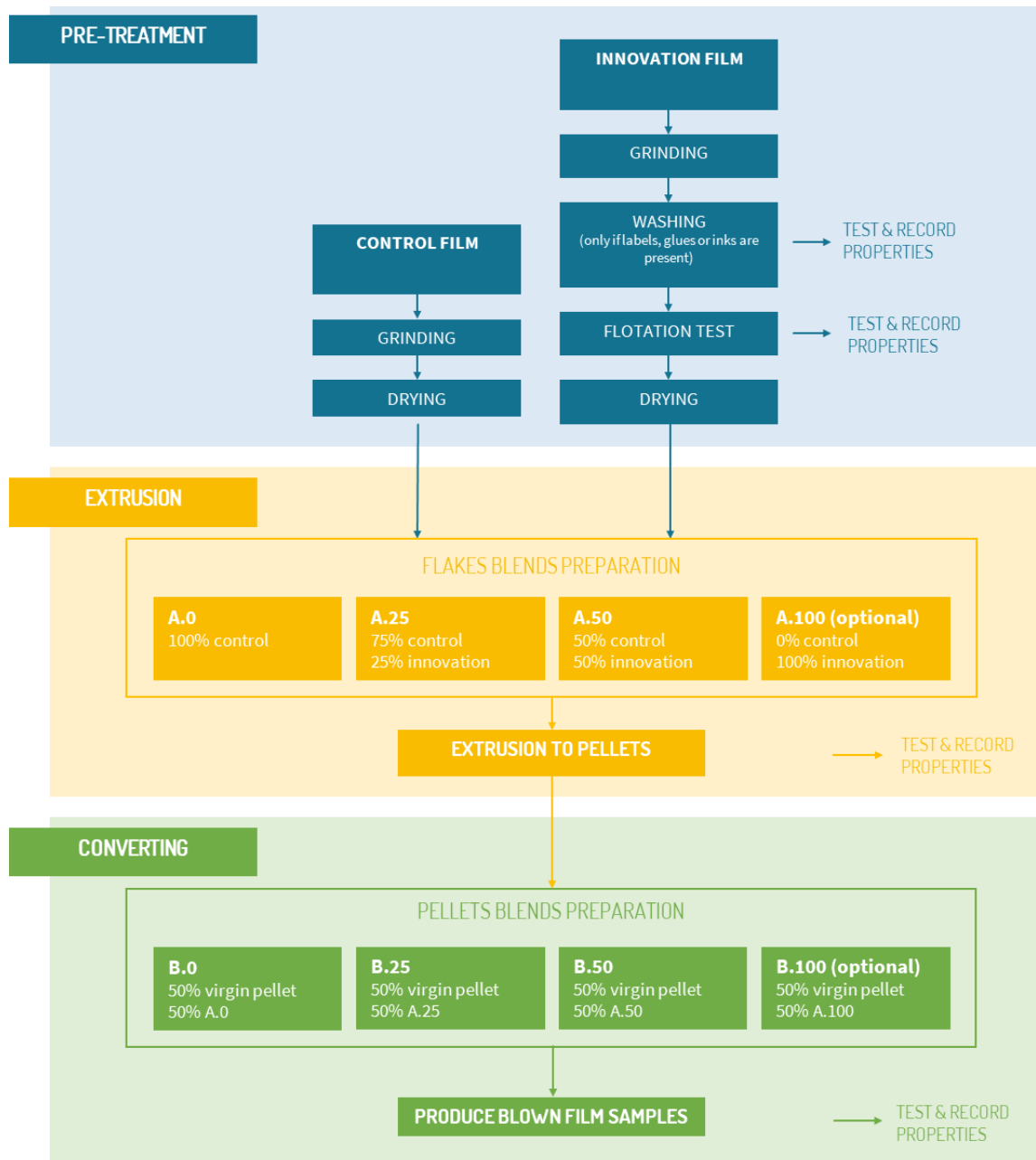
<sup>2</sup> [RecyClass Methodology](#)

# RecyClass

compiling objectively all the results obtained shall be prepared to report to the RecyClass PO films Technical Committee (TC), which will interpret the final results. Any remarks during the laboratory tests described in the Protocol shall also be noted down.

See below in Figure 1 a diagram describing the methodology.

Figure 1: Methodology diagram



## 4.1 CONTROL SAMPLE SELECTION

The control PE sample for the purpose of performing the Protocol can be selected:

- **Option 1:** If there is a PE film known to be recyclable, consisting of the same base PE resin as the Innovation, except/apart from the specific ingredient/feature being evaluated, it can be selected as the control for this Protocol, with the approval of the RecyClass PO films TC.
- **Option 2:** The applicant can select a PE resin listed in the Annex (or another grade with similar MFI and density from alternative suppliers) to be used as control for this Protocol, upon the approval of the PO films RecyClass Technical Committee. To obtain the control, the selected PE resin must be extruded once, following the recommendations for extrusion present in this protocol, in order to simulate the same thermal history that an actual packaging may have. The same physical form as the innovative material should be preferred.

These options will be used to make both the control flakes and the blends with innovation flakes that will contain the innovative feature(s) (barrier, adhesive, additive, coating, label, multilayer resin, etc.) for the recyclability study.

Since control material is used as reference to evaluate the impact of the innovation, A.0 and B.0 (see Figure 1) need to fulfil some minimum requirements to make the recyclability evaluation valid. RecyClass recognised testing facilities are aware of these minimum requirements and will inform both the Applicant and RecyClass in case of deviations.

For the purpose of the tests, the amount of material that the Applicant should provide will depend upon the equipment and scale used in each laboratory. Usually, at least 10 kg of innovation material (as packaging) and 25 kg of control material (as packaging) will be requested to prepare blends of at least 5 kg. More innovation samples could be requested in case optional tests are required by the RecyClass PO films TC. It is worth pointing out that the protocol should be used to test innovations as specific parts of the packaging, meaning that all the decorations or elements of the packaging do not need to be present. The objective is to evaluate the impact of a specific innovation on the recyclability of PE films. Note that complete packaging (with labels, decoration, closures, etc.) can also be assessed under this present Protocol.

## 4.2 VIRGIN SAMPLE SELECTION

The virgin PE sample to be used in this Protocol can be selected from the PE resins listed in Annex I or proposed by the applicant to match the target application. The choice of the virgin must be approved by the PO films TC and used as it is (i.e. without applying any thermal pre-treatment).



## 5. LABORATORY TEST PROCEDURES

### 5.1 PRE-TREATMENT STEPS

#### 5.1.1 GRINDING

Control (if provided as film) and innovation samples are separately ground in order to fit the feeding hopper of a standard laboratory extruder. In case the control is provided in the form of pellets, only the innovation sample has to be ground.

**Procedure:**

- Report the mass of each sample before grinding as  $m_0$ .
- Grind separately control and innovation sample to flakes of 3 to 15 mm.
- Store in separate containers.
- Report the mass of each sample after grinding as  $m_1$ .

#### 5.1.2 WASHING

Control and innovation samples are washed to test the impact on wet washing operations. Washing shall only be performed if paper, labels, adhesives, coatings or surface printing is present in innovative films. If none of those are present, go directly to step 5.1.3.

The following procedures must be used for innovation sample only.

**Procedure:**

- Prepare the wash container at a 1:24 ratio (1 g flakes vs 24 ml water) with tap water at a room temperature (+/- 20 – 25 °C). No added detergents or caustic soda.
- Wash each sample separately at a 1:24 ratio (1 g flakes vs 24 ml water) at 1000 rpm for 10 minutes.
- Rinse each sample at the same ratio with 500 rpm for 5 minutes.
- Pour the liquid-flake mix over the de-watering screen and save the wash water.
- Take photos at each step.

Save the washing and rinsing water separately for visual observation. Record the presence of suspended particles or fibers within the water as well as any water coloration. Visually check and record whether the glue has been diluted after the rinsing or whether it remains attached to film flakes.

#### 5.1.3 FLOTATION TEST

The flotation test will determine if the flakes can be separated by density in the float/sink tank used in the recycling operation.

The following procedure must be used for innovation sample only.

**Procedure:**

- Pour the washed flakes in a tank filled with water at a 1:24 ratio at a room temperature.
- Stir at 500 rpm for 10 minutes.
- Stop the stirrer and allow the water to rest for 2 minutes.
- Remove the tank from the magnetic stirrer.

- Collect all particles that float on the surface with a sieve.
- Collect separately the particles that sink.

The efficiency of the sink/float separation should be measured using 50 g of washed flakes of innovative samples and a graduated beaker filled with tap water, as described by the following procedure.

## Procedure:

- Fill a 1 l graduated beaker with 700 ml of tap water (pH between 7 and 8).
- Boil the water for 10 minutes, and then cool at room temperature.
- Transfer 300 ml of water to a graduated beaker.
- Put the innovative sample in the water and stir at 500 rpm for 2 minutes.
- Stop the magnetic stirrer and allow the water to rest for 2 minutes.
- Take photo of the beaker.
- Remove all particles that float on the surface with a sieve.
- Take photos of the floating and sinking fractions separately.
- Save the wash water for visual evaluation.
- Dry the floating fraction for 1 hour at 80 °C in a bed desiccant or 3 hours at 65 °C with air.
- Cool to room temperature, weigh and record the weight of the float fraction.
- Calculate the test efficiency as:

$$\eta = \frac{W_F}{W_I} = \frac{(W_I - W_S)}{W_I} \times 100 [\%]$$

Where:

$\eta$ : Test efficiency

$W_F$  : weight of floating fraction

$W_S$  : weight of sinking fraction

$W_I$  : weight of innovative sample

## 5.1.4 DRYING

Reduce the flake moisture at 60°C without applying vacuum to release surface moisture to less than 1%.

### Procedure:

- Heat the oven to 60 °C.
- Divide the flakes evenly between at least 4 dishes. The dishes are sequentially numbered.
- Weigh the different dishes with the control or innovation flakes before introducing them in the oven.
- As soon as the oven has reached 60 °C, the flakes are added to the oven without applying vacuum until 1% moisture content is reached.
- Report the mass of each sample after drying as  $m_4$ .
- Record the moisture content.

According to the mass measured at the different steps of the pre-treatment, fill the table in Annex 2 and determine the pre-treatment yield for both control and innovation as follow:

$$\eta_{PT} = \frac{m_4}{m_0}$$

Where:

$\eta$ : Pre-treatment yield

$m_0$  : mass of sample before grinding

$m_4$  : mass of sample after drying

## 5.2 EXTRUSION

### 5.2.1 FLAKE BLENDS PREPARATION

For each sample obtained, to evaluate and record the properties of innovation PE films against control as laid out in this Protocol, a set of flake blends is prepared as described in Table 1. Blends shall be produced once the control and innovation films have separately gone through all pre-treatment steps described above.

Keep separated the control and innovation flakes obtained following the previous steps, and air dry for 24 hours in an ambient environment. Then, according to the values reported in Table 1 prepare three different dry blends with 100 % control (and 0 % innovation), 75 % control – 25 % innovation, and 50 % control – 50 % innovation, and tag them respectively as A.0, A.25 and A.50.

For the purpose of the tests, the Applicant should provide enough innovation and control materials which allows for the blend preparations (cf. section 4.1.).

### 5.2.2 FLAKE BLENDS COMPOSITION

Three different blends 0 %, 25 % and 50 % of innovation film (optionally 100 % innovation film), will be prepared as described in Table 1.

Depending on the application, the TC can also ask the Applicant to perform the tests with a sample of 100 % innovation (i.e., A.100, by replacing the test with A.25).

*Table 1: Flake blends composition for the production of pellets*

<b>BLEND</b>	<b>COMPOSITION</b>	<b>% CONTROL FILM</b>	<b>% INNOVATION FILM</b>
<b>A.0</b>	100 % Control film	100	0
<b>A.25</b>	75 % Control film 25 % Innovation film	75	25
<b>A.50</b>	50 % Control film 50 % Innovation film	50	50
<b>OPTIONAL A.100</b>	100 % Innovation film	0	100

## 5.2.3 PELLET PRODUCTION

Both control and innovation flakes can be mixed manually before extrusion for blends preparation. If extrusion is not carried out directly after the previous drying stage, the flakes need to be dried under the same conditions with hot air. The level of moisture must be below 1 %. The flakes are extruded using a co-rotative twin-screw extruder at a melt temperature of 230 °C. The extrudate will be melt filtered with a 110 µm filter. When needed, for low bulk density materials, a densification step can be used prior extrusion to effectively feed the extruder, under the agreement of the RecyClass PO Films Technical Committee. Densification should be done following the procedure FPE-P-04 developed by APR<sup>1</sup>.

Control flake sample A.0 has to be extruded first. Further size reduction before extrusion is acceptable if needed to allow good feeding of the material into the extruder. Nevertheless, the flake size should be kept constant between all samples.

The extruder has to be cleaned before starting the extrusion process. This involves pulling the screws out of the barrel and then mechanically cleaning them with brass brushes until they reach a glossy finish. The barrel also has to be mechanically cleaned with round brass brushes from the mandrel to the run-out zone.

### Procedure:

- If a densification step was performed, report the equipment used, as well as condition and procedures followed.
- Dry samples A.0, A.25 and A.50 (optionally A.100) with hot air at 90 °C for 1 hour maximum to decrease surface moisture below 1%. Any agglomeration of flakes must be reported.
- Extrude at a melt temperature of  $230 \pm 5$  °C with a suggested filtration screen of 110 µm. If the range is not optimal, record temperature and state reasons for alteration. Melt residence time should be less than 6 minutes.
- Recommended throughput is between 5 and 10 kg/h and rotation speed between 100 and 200 rpm.
- Extrusion run time per variable, no less than 30 minutes.
- Extrusion load > 50%
- Record a 10 second video of the extrusion for each blend, to allow observations of fumes, or volatiles. The video should be centred on the dye.
- Torque and pressure over time must be monitored and reported. If a continuous monitoring is not possible, 5 data points should be measured within the 30 min extrusion.
- Verify that the average pressure is less than 25 % superior to the control over a stable 15 minutes run time.

Record the resulting observations during extrusion in Table 2, and pellets properties in Table 3. The processing conditions used for all the samples must be identical. If some operating conditions need to be modified for A.25 and A.50 (optionally A.100) samples, this information must be documented in the report. A small amount of each sample (50 g) will be retained for the RecyClass PO films TC and the Applicant. The extruded pellets will be tested for pellet properties evaluation (Table 2). The pellets of the test samples will be compared with the pellets of the control sample. All pellets should meet the requirements reported in Table 2.

---

<sup>1</sup> [APR PE Film Practices FPE-P-00](#)

## 5.2.3.1 EXTRUSION PROCESS OBSERVATIONS

Table 2: Extrusion process observations & monitoring

ASSESSMENT	STANDARD	BENCHMARK RECOMMENDATION
Odours	<p><b>0:</b> No noticeable odours, even right next to the extruder.</p> <p><b>1:</b> Slight odour near the extruder, noticeable but not a problem for operators.</p> <p><b>2:</b> Strong odour in the work area, sometimes needing ventilation but still manageable.</p> <p><b>3:</b> Very strong odour making it uncomfortable, forcing operators to move away from the extruder or use protective equipment</p>	<p>0 or 1</p> <p>If odours present, report more details</p> <p>Report with pictures in comparison with A.0</p>
Fumes	<p><b>0:</b> No visible fumes observed near the extruder.</p> <p><b>1:</b> Slight fumes observed, disappearing quickly.</p> <p><b>2:</b> Moderate fumes, clearly visible and staying in the air for some time.</p> <p><b>3:</b> Heavy fumes, very visible and dense, making it hard for operators to stay near the extruder.</p>	<p>0 or 1</p> <p>If 2 or 3, report with pictures</p> <p>Report with pictures in comparison with A.0</p>
Odours	<p><b>0:</b> No noticeable odours, even right next to the extruder.</p> <p><b>1:</b> Slight odour near the extruder, noticeable but not a problem for operators.</p> <p><b>2:</b> Strong odour in the work area, sometimes needing ventilation but still manageable.</p> <p><b>3:</b> Very strong odour making it uncomfortable, forcing operators to move away from the extruder or use protective equipment</p>	<p>0 or 1</p> <p>If odours smelled, report more details</p> <p>Report with pictures in comparison with A.0</p>
Filtration (110 µm)	Visual inspection. In case of presence of build-ups, an FTIR analysis is recommended to identify the origin of the deposit.	No build-up on the screen
Average Pressure (MPa)	Average pressure after extruding through 110 µm filter for the stable 15 minutes run time, compared to 100 % control	No more than a 25 % increase to A.0
Pressure Variation (MPa)	$(\Delta P_{25-30\text{minutes}} - \Delta P_{5\text{ first minutes}})$	No increase higher than 25 % compared to start

## 5.2.3.2 PELLET PROPERTIES CHARACTERISATION

Table 3: Pellet properties characterisation

ASSESSMENT	STANDARD	BENCHMARK RECOMMENDATION
Bulk density (kg/m <sup>3</sup> )	Annex B of EN 15344	Superior to 500 kg/m <sup>3</sup>
Density (kg/m <sup>3</sup> )	ISO 1183-1	A.25 and A.50 (and eventually A.100) lower than 0.940 g/cm <sup>3</sup> for natural films and lower than 0.970 g/cm <sup>3</sup> for coloured films
Melt Index (g/10 min)	ISO 1133 (190 °C/2.16 kg)	< 0.75 g/10 min delta to the control
Volatiles (wt%) before and after extrusion	Heat 10 g blends (before extrusion) and pellets (after extrusion) exposed to 230 °C for 10 minutes	± 0.1 % for A.25 and A.50 (and eventually A.100) respect to A.0 measured on cold material.
Ash content (wt%)	ISO 3451-1 (muffle) up to 750°C	A.50 lower than 1 wt% (A.100 lower than 2 wt%)
Moisture content (wt%)	Moisture Analyzer	<0.1 wt%
Melt Temperature (°C)	ISO 11357-3:2018 (Heat-cool-heat cycle under N <sub>2</sub> at 10 °C/min from 0 °C to 250 °C with 1 minute of isotherm between each ramp)	Melt Temperature second heating < 150 °C
Impurities (unmolten particles)	Visual inspection	Record
Surface appearance	Visual inspection	Record
PP (%)	Differential Scanning Calorimetry or Spectroscopic measurement via FTIR (method under development)	No more than 2.5 % for A.50 (and eventually no more than 5 % for A.100)
Reflection Colour	(L*, a*, b*) + ΔE Reflectance mode, D65, 8-10°	For natural stream: Δb* < 5 ΔE < 5

## 5.3 CONVERSION

Prior the recyclability assessment, the RecyClass PO Films TC will decide the process to be used for conversion according to the highest value recyclate application for the innovation. In the present case, all innovative PE Films recyclate will be converted via blown film extrusion. For blown films production, three blends of innovation and control pellets will be produced aiming to assess different innovation concentration in the recycling stream, as described below.

### 5.3.1 PELLET BLENDS PREPARATION

Once PE pellets have been produced and tested, three additional blends of 50 % virgin – 50 % blend “A.X” (X being 0, 25, 50 or 100) shall be produced for the converting tests. Keep separated the pellet samples previously produced and

dry them for 10 minutes at 60 °C. Then, according to the values reported in Table 3 prepare three different blends with 0 % innovation (50 % virgin and 50 % A.0 pellets), 12.5 % innovation (50 % virgin and 50 % A.25 pellets), and 25 % innovation (50 % virgin and 50 % A.50 pellets), and tag them as samples B.0, B.25 and B.50 respectively.

Depending on the application and its market penetration, the TC can ask the Applicant also to perform the tests with a sample of 50 % virgin and 50 % innovation (i.e. B.100, by replacing the test with B.25).

For the purpose of the tests the Applicant should provide enough virgin materials which allows for the blend preparations. The laboratory carrying out the Protocol testing can define the amounts according to their best knowledge.

## 5.3.2 PELLET BLENDS COMPOSITION

Three different blends of blown film at 50 % virgin pellet – 50 % Blend A shall be produced as described in Table 3. Blends will be composed of 0 %, 12.5 % and 25 % content (eventually ending at 50 %) based on the weight of the initial innovation film.

*Table 3: Pellet blends composition for the application tests*

<b>BLEND</b>	<b>COMPOSITION</b>	<b>% VIRGIN RESIN</b>	<b>EFFECTIVE % CONTROL FILM</b>	<b>EFFECTIVE % INNOVATION FILM</b>
<b>B.0</b>	50 % Virgin Pellet 50 % A.0	50	50	0
<b>B.25</b>	50 % Virgin Pellet 50 % A.25	50	37.5	12.5
<b>B.50</b>	50 % Virgin Pellet 50 % A.50	50	25	25
<b>OPTIONAL B.100</b>	50% Virgin Pellet 50 % A.100	50	0	50

## 5.3.3 BLOWN FILM PRODUCTION

### **Procedure:**

- Report the equipment and the die used.

Produce blown film with a fixed blow-up ratio (BUR) between 2.5 and 3 (should be kept constant between all samples), at a melt temperature of 200 – 230 °C. A film thickness of  $25 \pm 5 \mu\text{m}$  should be targeted for at least 30 minutes followed by a film with a thickness of  $50 \pm 5 \mu\text{m}$  during 30 minutes.

- Report the melt temperature during the 30-minutes run time of the  $25 \mu\text{m}$  film production.
- Record production properties in Table 4, including information regarding structure, holes, and stability of the  $25 \mu\text{m}$  blown film.
- Mechanical characterisations (Tear strength, tensile properties, dart impact and puncture resistance) must be done on the  $50 \mu\text{m}$  blown film.

- For “Gels & Specks” evaluation, refer to the Annex 3 “PE Film Surface Impression Evaluation and Impurity Visual Inspection”. This characterisation must be done on the 25 µm blown film. If gels are large enough ( $\pm 1 \text{ mm}^2$ ), an IR analysis is requested.
- Report the morphology of the gels by performing microscopy or any other optical measurement allowing it.

## 5.3.3.1 BLOWN FILM PROPERTIES CHARACTERISATION

Table 4: Blown film properties characterisation\*

ASSESSMENT	STANDARDS	BENCHMARK RECOMMENDATIONS		
Thickness (µm)	ISO 4593; DIN 53370	25 ± 5 µm & 50 ± 5 µm		
Tear Strength (TD**) (N)	DIN EN ISO 6383-2; DIN EN ISO 1974	-		
Tear Strength (MD***) (N)		-		
Tensile Stress at Yield (TD) (MPa) (if observed and if not take it at 10 % elongation)	DIN EN ISO 527-3 (Type 2 samples, L0 = 50 mm, test speed = 100 mm.min <sup>-1</sup> )	-		
Tensile Stress at Yield (MD) (MPa) (if observed and if not take it at 10 % elongation)		-		
Elongation at Yield (TD) (%)		-		
Elongation at Yield (MD) (%)		No more than a 25 % decrease to B.0		
Tensile Stress at Break (TD) (MPa)		> 10 MPa		
Tensile Stress at Break (MD) (MPa)		> 10 MPa		
Elongation at Break (TD) (%)		> 400%		
Elongation at Break (MD) (%)		> 250%		
Dart Impact (g)		ISO 7765	> 50 g	
Puncture Resistance (N)		DIN EN 14477	-	
Haze (%)	DIN EN ISO 14782	Record. Increase of haze will lower the visual aspects		
Gels and Specks (Annex 3)	5 samples of 100 cm <sup>2</sup> for a gel and specks count greater than 200 µm seen by the naked eye at 30 cm from sample. The number	Record the amount and aspect of each gels, specks, fisheyes and holes separately. Add	< 100 Gels & Specks	



# RecyClass

	will be recorded but no standard required.	microscope pictures of them to show size, shape, distribution.	
Surface Appearance		Record. Limit the end use application.	

*\*Film testing results are minimum conditions. Historical data over time may require adjustments for specification change and requirements for specific applications.*

*\*\*TD: transverse direction*

*\*\*\*MD: machine direction*

## DOCUMENT VERSION HISTORY

VERSION	PUBLICATION DATE	REVISION NOTES
1.0	September 2018	Recyclability Evaluation Protocol for PE Films release
2.0	May 2021	Major modifications about procedure, wording & template
3.0	January 2022	Revised wording and removal of some testing, addition of new control materials
3.1	August 2022	Mandatory washing and floatation step for control sample removed Wording for sample quantity requested for testing Temperature recommendations for extrusion are now melt temperatures
4.0	January 2023	Addition minimum requirements for control material Addition pre-treatment yield and Annex 2 Addition of densification step prior extrusion, and addition of extrusion procedures Removal of TGA analysis for ash content Addition of benchmark recommendation for colour measurement Addition of fixed benchmark recommendations for tensile testing and dart impact Modification of the gels & specks evaluation with addition of Annex 3
5.0	January 2024	Modification grinding and drying conditions Removal of washing as mandatory for control material Addition of reference to APR densification procedure Removal of bulk and pellet size characterisation Clarification on colour, volatiles, and gas content characterisations Addition of production of 50 µm film for mechanical characterisation Harmonisation mechanical characterisation parameters Microscopy mandatory for gels/specks analysis
6.0	January 2025	Revised wording Addition of video recording during extrusion Clarification on odours, fumes, dye build ups characterisations Addition of bulk density / Removal gas content measurement Modification volatiles characterisation method Clarification tensile stress at yield Peer reviewed version

## ANNEX I – CONTROL & VIRGIN SAMPLES SELECTION

TYPE OF RESIN	LDPE & LLDPE RESINS*	DENSITY, g/cm <sup>3</sup>	MFI at 190 °C / 2.16 kg, g/10 min
LDPE	BOREALIS FT5230	0.923	0.75
LDPE	DOW 310E	0.923	0.75
LDPE	ENI Versalis Riblene FF33	0.923	0.80
LDPE	ExxonMobil LD150BW	0.923	0.75
LDPE	LyondellBasell Lupolen 2420F	0.923	0.75
LLDPE	Dowlex 2045G	0.920	1.0
LLDPE	Dowlex 2740G	0.940	1.0
LLDPE	Dowlex 2750ST	0.950	1.5
LLDPE	Dowlex 2107GC	0.917	2.3

\*Other LDPE or LLDPE grades with similar MFI and density from alternative suppliers can also be accepted.

## ANNEX II – MASS BALANCE FOR PRE-TREATMENT STEPS

MASS (g)	CONTROL SAMPLE	INNOVATION SAMPLE
Before grinding: $m_0$		
After grinding: $m_1$		
After drying: $m_4$		
Pre-treatment yield: $\eta_{PT}$		

## ANNEX III – PE FILM SURFACE IMPRESSION EVALUATION AND IMPURITY VISUAL INSPECTION

### PE Film Surface Impression Evaluation and Impurity Visual Inspection

Defect description	Rating			
	Very Smooth	Smooth	Rough	Very rough
Texture				
Gels larger than 0.2 mm	: Defined as visually uniform small clumps of crosslinked polymers			
	< 50	50-100	> 100	for 500 cm <sup>2</sup>
Carbon black particles/Specks	: Defined as very small contaminants, possibly darker in colour			
	< 10	10-15	> 15	for 500 cm <sup>2</sup>
Fisheyes	: Defined as small round or oblong shapes with darker/more concentrated centre			
	≤ 3	4-6	> 6	for 500 cm <sup>2</sup>
Holes	: Defined as tears in the blown film bubble starting at, or caused by, gels, specks or fisheyes			
	0	1 or more		

Preferred range	Limited	Non-acceptable
-----------------	---------	----------------

For evaluation procedures, RecyClass recommends following the Appendix A “Evaluation of Blown Film Appearance Rating Calculation Totals for Control and Test” present in the APR PE Film critical guidance FPE-CG-01<sup>1</sup>

Defect description	B.0	B.25	B.50	B.100
Texture				
Gels larger than 0.2 mm				
Carbon black particles/specks				
Fisheyes				
Holes				

Report here the exact amount of defects observed, as well as standard deviations.

<sup>1</sup> APR PE Film critical guidance FPE-CG-01

# RecyClass

RecyClass  
Avenue de Broqueville 12  
1150 Brussels – Belgium

Phone : +32 2 786 39 08  
info@recyclclass.eu

[www.recyclclass.eu](http://www.recyclclass.eu)