

RecyClass

RECYCLABILITY EVALUATION PROTOCOL

FOR PP CONTAINERS

STANDARD LABORATORY PRACTICE

CONTENT

| | |
|---|----|
| CONTENT | 2 |
| GLOSSARY | 3 |
| 1. INTRODUCTION AND PURPOSE OF THE PROTOCOL | 5 |
| 2. SCOPE OF THE PROTOCOL | 6 |
| 3. DISCLAIMER | 6 |
| 4. LABORATORY TEST METHODOLOGY | 6 |
| 4.1 CONTROL SAMPLE SELECTION | 8 |
| 4.2 VIRGIN SAMPLE SELECTION | 8 |
| 5. LABORATORY TEST PROCEDURES | 8 |
| 5.1 PRE-TREATMENT STEPS | 8 |
| 5.1.1 GRINDING | 8 |
| 5.1.2 WASHING | 9 |
| 5.1.3 FLOTATION TEST | 9 |
| 5.1.4 DRYING | 10 |
| 5.1.5 AIR ELUTRIATION | 10 |
| 5.2 EXTRUSION | 11 |
| 5.2.1 FLAKE BLENDS PREPARATION | 11 |
| 5.2.2 FLAKE BLENDS COMPOSITION | 11 |
| 5.2.3 PELLET PRODUCTION | 12 |
| 5.2.4 INJECTION MOULDING | 15 |
| 5.3 CONVERTING | 16 |
| 5.3.1 PELLET BLENDS PREPARATION | 16 |
| 5.3.2 PELLET BLENDS COMPOSITION | 16 |
| 5.3.3 BOTTLES BLOW MOULDING | 17 |
| 5.3.4 SHEET EXTRUSION | 19 |
| DOCUMENT VERSION HISTORY | 21 |
| ANNEX I – CONTROL SAMPLES SELECTION | 22 |

GLOSSARY

| | |
|--------------------------|--|
| A.0 | 100% control flakes |
| A.25 | Blend 75/25 control/innovation flakes |
| A.50 | Blend 50/50 control/innovation flakes |
| A.100 | Blend 100% innovation flakes |
| ASTM | American Society for Testing and Materials |
| B.0 | Bottle made of 50% of virgin pellets and 50% of B.0 pellets |
| B.25 | Bottle made of 50% of virgin pellets and 50% of B.25 pellets |
| B.50 | Bottle made of 50% of virgin pellets and 50% of B.50 pellets |
| B.100 | Bottle made of 50% of virgin pellets and 50% of B.100 pellets |
| C.0 | Sheet made of 50% of virgin pellets and 50% of B.0 pellets |
| C.25 | Sheet made of 50% of virgin pellets and 50% of B.25 pellets |
| C.50 | Sheet made of 50% of virgin pellets and 50% of B.50 pellets |
| C.100 | Sheet made of 50% of virgin pellets and 50% of B.100 pellets |
| Control Sample | Plain PP container (or PP resin that has already been thermally processed once) used as benchmark |
| D.0 | Plate made of 100% control pellets |
| D.25 | Plate made 75% control and 25% innovation pellets |
| D.50 | Plate made 50% control and 50% innovation pellets |
| D.100 | Plate made 100% innovation pellets |
| EN | European Standard |
| Innovation Sample | Container containing the innovative technology |
| ISO | International Organization for Standardization |
| MFI | Melt Flow Index |
| PE | Polyethylene |
| PP | Polypropylene |
| PVC | Polyvinyl Chloride |
| TC | Technical Committee |
| TGA | Thermo Gravimetric Analysis |
| Virgin Material | PP resin that will for the first time be converted to a plastic product (no thermal pre-treatment) |
| wt% | Weight Percentage |

RecyClass

DISCLAIMER

“RecyClass is an initiative aiming at enhancing and evaluating the recyclability of plastic packaging through a technical perspective. The Recyclability Evaluation Protocols will promote recyclability by encouraging industry to test new plastic technologies, materials or product before market launch and giving advice and recommendations to the companies.

The Recyclability Evaluation Protocols are available for download in the RecyClass websites. Companies providing plastic packaging concepts are encouraged to use them to self-assess the impact of their solutions on recyclability and highlight potential issues. **However, compliance to a Recyclability Evaluation Protocol is not a replacement for an official assessment and may not be used as a marketing tool.**

All tests must follow the Evaluation Protocols recommended by the RecyClass Technical Committees and must be conducted by an independent laboratory approved by RecyClass which has no legal affiliation to the applicant.

More information is reported in the RecyClass Internal Procedures available in the [RecyClass website](#).”

1. INTRODUCTION AND PURPOSE OF THE PROTOCOL

The “Recyclability Evaluation Protocol for PP Containers” referred to in this document as “The Protocol” describes the methodology that must be followed by the applicant at a laboratory scale in order to determine if a plastic packaging innovation is compatible with the post-consumer PP recycling stream. The Protocol targets companies responsible for introducing a packaging product into the market. The applicant shall proceed with the Protocol as established in the Assessment Process for Applicants of Recyclability Evaluation in the “RecyClass¹ Internal Procedures”.

The Protocol analyses whether an innovation will undergo the necessary pre-treatment, extrusion and conversion steps described in this methodology at a laboratory scale without negatively impacting the recycling process. It aims to guarantee recyclability² of plastics packaging while encouraging innovation in the PP market. The overall goal is to maintain the protection of packaged goods and their marketing display functions without obstructing the proper functioning of the PP recycling process.

This document provides guidance on the tests methodology that shall be followed, including benchmark recommendations to guide the interpretation of the results.

PP terminology as it is used in this document, refers to rigid plastic containers (bottles, thermoforming, thin wall packaging) predominantly used for packaging liquids, cosmetics, and detergents, as well as food contact applications.

1 RecyClass assesses the recyclability of a plastic package providing a ranking from A to F. RecyClass also provides specific indications and recommendations on how to improve packaging design to fit current recycling technologies. More information at <https://recyclass.eu/>

2 Recyclability definition according to PRE & APR: Plastics must meet four conditions for a product to be considered recyclable: 1. The product must be made with a plastic that is collected for recycling, has market value and/or is supported by a legislatively mandated program. 2. The product must be sorted and aggregated into defined streams for recycling processes. 3. The product can be processed and reclaimed/recycled with commercial recycling processes. 4. The recycled plastic becomes a raw material that is used in the production of new products.

RecyClass

2. SCOPE OF THE PROTOCOL

The scope of the Protocol covers any innovation introduced to the existing packaging solutions for PP. Prior to initiating the evaluation, the applicant shall review the Design for Recycling Guidelines for natural and coloured PP containers³ in order to confirm that the PP innovation is compatible with these requirements.

The following packaging solutions and/or innovations are covered by the scope of this Protocol:

1. PP resins
2. Barrier and coating materials
3. Mineral fillers and additives
4. Non-PP closure systems and lidding films
5. Non-PP liners, seals, and valves
6. Non-PP labels and sleeves
7. Adhesives
8. Printing and Inks
9. Attachments

Following RecyClass methodology⁴, packaging containing aluminium, metal, silicone, degradable plastics, black carbon surface, as well as PVC and PVDC layers are considered as disqualified for recyclability. By consequence, packaging containing one of these features do not fall under the scope of this Protocol.

3. DISCLAIMER

The Protocol is created to represent as accurately as possible how the current PP recycling works at an industrial scale. RecyClass PP Technical Committee reserves the right for further testing if necessary, to issue an additional opinion on the recyclability of the tested packaging.

Within RecyClass, “easy-to-empty” and “easy-to-access” indexes are important factors when considering the recyclability of a package. At the state of the art, at PP mechanical recycling facilities washing operation typically uses mild conditions, no detergents nor strong chemicals. Consequently, any food residue constitutes an impurity for the recycling stream. RecyClass encourages testing to verify that the package is “easy-to-empty” and therefore ensures the minimum amount of leftover material at the end of its useful life. Nonetheless, this factor is beyond the scope of this Protocol.

4. LABORATORY TEST METHODOLOGY

This methodology aims to reproduce the recycling process at laboratory scale to determine the suitability of an innovation for the PP recycling stream. The methodology described below shall be followed precisely and any modifications or problems must be noted during the testing phase. A Lab Evaluation Report compiling all the results obtained shall be prepared to report to the RecyClass Technical Committee which will interpret the final results. Any remarks during the laboratory tests described in the Protocol shall be also noted down.

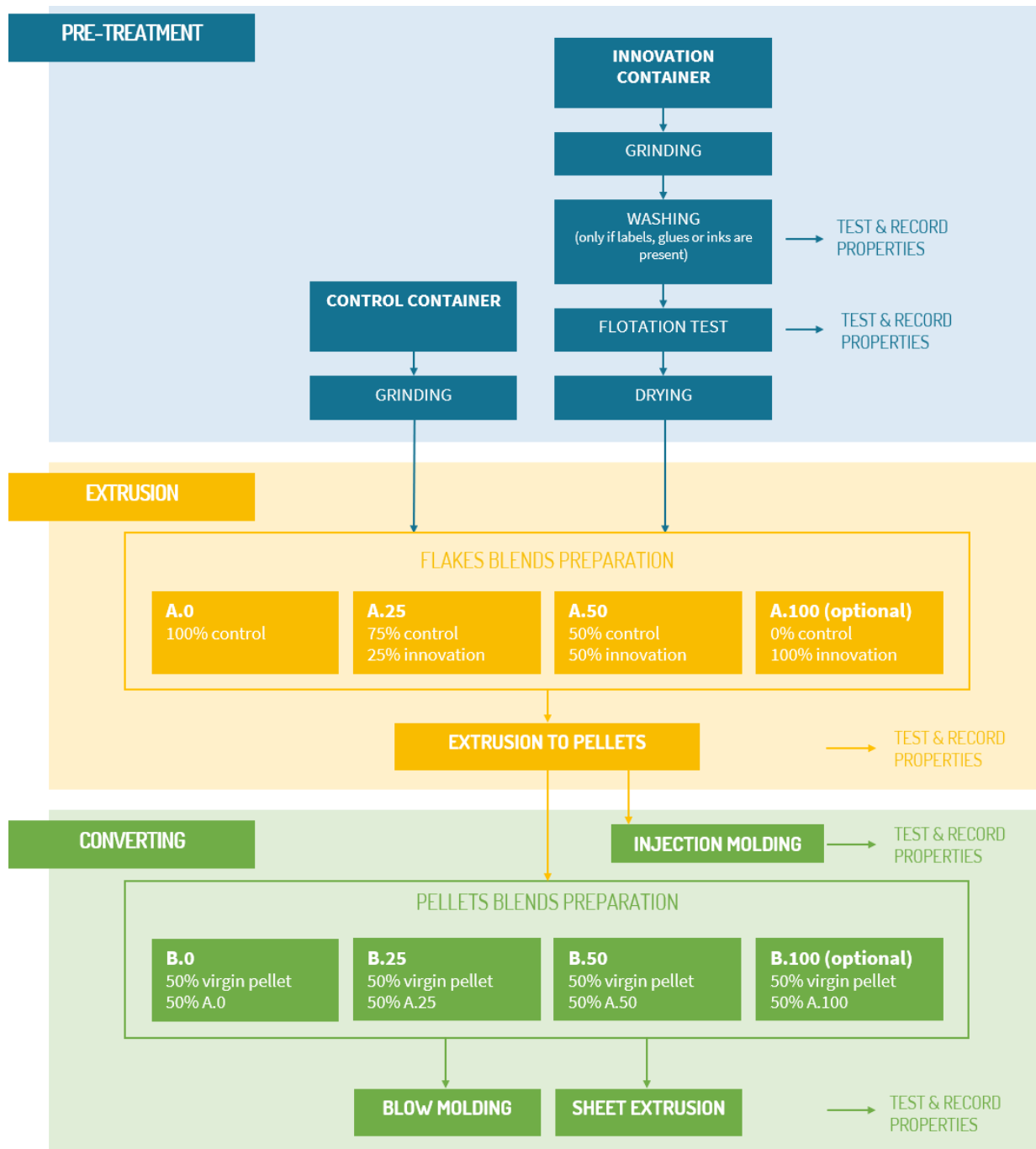
³ [Design for Recycling Guidelines](#)

⁴ [RecyClass Methodology](#)

RecyClass

See below in Figure 1 a diagram where the flow of the methodology is described.

Figure 1: Methodology Diagram



4.1 CONTROL SAMPLE SELECTION

The control PP for use following the Protocol can be selected by:

- **Option 1:** If there is a PP container known to be recyclable, consisting of the same base PP virgin materials as the Innovation, except/apart from the specific ingredient/feature being evaluated, it can be selected as the control for this Protocol, with the approval of the RecyClass PP TC.

- **Option 2:** The Applicant can select a PP resin with the same critical technical specifications for MFI and density as the innovation article, $\pm 10\%$ and ± 0.005 density can be used as the control for this Protocol, with/upon the approval of RecyClass PP TC. A selection of control samples to be used is reported in Annex I. The selected material must be extruded at 220°C to obtain the control sample. This step is necessary to realistically represent a material already used as packaging by erasing its previous thermal history.

These options are to be used to make both the control flakes and the blends with innovation container flakes that will contain the innovative feature(s) (additive, coating, label, adhesive, multilayer resin ...) for the recyclability study.

For the purpose of the tests the Applicant should provide at least 10 kg amount of innovation material (as packaging) and 25 kg amount of control material (as packaging) which allows for blend preparations of at least 5 kg each. More innovation material could be requested if optional tests are required by the RecyClass PP Technical Committee. It is worth pointing out that the innovation to be tested is not limited to the main body of the packaging but to all its parts. Therefore, the innovation has to be submitted to the laboratory procedures with labels, adhesives, closure system, liners, seals, valves (if any). If it can be correctly argued that labels and adhesives have no impact on the innovation, the innovation samples can be processed without the presence of labels and adhesives.

4.2 VIRGIN SAMPLE SELECTION

The virgin PP sample for use following the Protocol can be selected by the PP resins listed in the Annex and used as it is (i.e. without applying any thermal pre-treatment).

5. LABORATORY TEST PROCEDURES

5.1 PRE-TREATMENT STEPS

5.1.1 GRINDING

Control (if provided as container) and innovation samples are separately grinded in order to fit the throat of a standard laboratory extruder. In case the control is submitted under the shape of pellets, only the innovation sample has to be grinded.

Procedure:

- Record the weight of the samples.
- Grind separately control and innovation sample to flakes of 3 to 15 mm.
- Store in separate containers.
- Recording the weight losses and average flake sizes.

5.1.2 WASHING

At the state of the art, European PP recycling lines use mild washing conditions, no detergents nor strong chemicals. The procedure takes care of labels, adhesives, coatings, paper, and printing present in the innovation PP container. If none of those are present, go directly to step 5.1.3.

The following procedures have to be utilized for both control and innovation samples, separately.

Procedure:

- Prepare the wash in a vessel at a 1:4 ratio (10 kg flakes vs 40 l water) with tap water. No added detergents or caustic soda.
- Heat the wash at 40°C.
- Wash each sample separately at a 1:4 ratio (10 kg flakes vs 40 l water) at 1.000 rpm for 5 minutes.
- Save a wash sample for visual evaluations
- Rinse the flakes in the strainer with cold running tap water and stir vigorously for 5 minutes using manual stirring bar. Then drain the material.
- Take photos at each step.

Save the wash and rinse water separately for visual observation. Record the presence of suspended particles or fibres within the water as well as any water coloration. Check and record if the glue has been diluted after the rinsing or it remains attached to film flakes. In the case, water coloration, particles, fibres or remaining glue are observed, washing and bleeding ink Quick Test procedures developed by RecyClass can be used to quantitatively assess these deviations⁵.

5.1.3 FLOTATION TEST

Following the washing, the flotation process allows flake separation by density as occurring in the float/sink tank used in an industrial recycling line. For a suitable recycling, both density separation efficiency and quality of the floating material should be optimized. Therefore:

- Combinations of polypropylene and other materials that float in water should be avoided in order to minimize the risk of contamination. In the case not 100% of the flakes would float, separation efficiency will be determined on the basis of the innovative packaging composition.
- Non-PP components floating together with PP flakes should be avoided as they cannot be further separated and are extruded with PP. This non-PP components are therefore acting as contaminants and pose relevant concerns both in the process operations and in the quality of the recycle.

The following procedure has to be utilized for both control and innovation samples, separately.

Procedure:

- Fill a vessel with tap water at a 1:6 ratio (10 kg washed flakes vs 60 l water).
- Put each sample separately in the water and stir at 500 rpm for 2 minutes.

⁵ [RecyClass Quick Test Procedures](#)

RecyClass

- Stop the stirrer and allow the water to rest for 2 minutes.
- Remove all the materials that float at the surface with a sieve.
- Take photos of the floating and sinking fractions separately.
- Save the wash for visual evaluation.

The test is passed if 100% of olefin material is floating. It means non-PP material cannot stick or not get separated from PP and cause PP to sink, resulting in yield losses or stay with PP and contaminate the PP stream.

The efficiency of the sink/float separation should be measured using 50 g of washed flakes of innovative samples and a graduated beaker filled with tap water, as described by the following procedure. Repeat the procedure for washed and dried innovation flakes, with and without caps and labels.

Procedure:

- Fill a 1 l graduated beaker with 700 ml of tap water (pH between 7 and 8).
- Boil the water for 10 minutes, and then cool at room temperature.
- Transfer 300 ml of water in a graduated beaker.
- Put the innovative sample in the water and stir at 500 rpm for 2 minutes.
- Stop the magnetic stirrer and allow the water to rest for 2 minutes.
- Take photo of the beaker.
- Remove all particles that float at the surface with a sieve.
- Take photos of the floating and sinking fractions separately.
- Save the wash for visual evaluation.
- Dry the floating fraction for 1 hours at 80 °C in a bed desiccant or 3 hours at 65 °C with air.
- Cool to room temperature, weigh and record the weight of the float fraction.
- Repeat the procedure with 50 g of the innovation flakes without caps and labels (if any).
- Calculate the test efficiency as $(\text{weight of sinking fraction}) / (\text{weight of innovative sample}) \times 100$ (in %), separately for the innovation samples with and without caps and labels.

5.1.4 DRYING

Reduce the flake moisture with ambient air to release surface moisture to less than 1%.

Procedure:

- Dry the flakes collected after floatation with air at room temperature without the application of vacuum or heat sources until 1 % moisture content is reached.

5.1.5 AIR ELUTRIATION

Control and innovation PP flakes are separately elutriated with air to remove light fraction.

Procedure:

- Elutriate flakes with air with one pass and with less than 2% loss set for the control flakes.

5.2 EXTRUSION

5.2.1 FLAKE BLENDS PREPARATION

For each sample obtained, to evaluate and record the properties of innovation PP container against control as laid out in this Protocol, a set of flake blends is prepared as described in Table 1. Blends shall be produced once the control and innovation have separately gone through all pre-treatment steps described above.

Keep separated the control and innovation flakes obtained following the previous steps, and air dry for 24 h at ambient air. Then, according to the values reported in Table 1 prepare three different blends with 100% control (and 0% innovation), 75% control - 25% innovation, and 50% control - 50% innovation, and tag them respectively as A.0, A.25 and A.50.

Eventually, depending on the application and its market penetration, the TC can ask the Applicant also to perform the tests with a sample of 100% innovation (i.e. A.100, by replacing the test with A.25).

For the purpose of the tests the Applicant should provide enough innovation and control materials which allows for the blend preparations (cf. section 4.1.).

5.2.2 FLAKE BLENDS COMPOSITION

Three different blends 0%, 25% and 50% of innovation HDPE container (optionally 100% innovation), will be prepared as described in table 1.

Eventually, depending on the application and its market penetration, the TC can ask the Applicant also to perform the tests with a sample of 100% innovation (i.e. A.100, by replacing the test with A.25).

Table 1: Flake blends composition for the production of pellets

| BLEND | COMPOSITION | % CONTROL | % INNOVATION |
|---------------------------|-------------------------------|------------------|---------------------|
| A.0 | 100% Control | 100 | 0 |
| A.25 | 75% Control 25% Innovation | 75 | 25 |
| A.50 | 50% Control 50% Innovation | 50 | 50 |
| OPTIONAL A.100 | 100% Innovation | 0 | 100 |

5.2.3 PELLET PRODUCTION

Both control and innovation flakes can be mixed manually before extrusion for blends preparation. The flakes will be dried at the same conditions with a desiccant bed drying unit or with hot air and extruded using co-rotative twin-screw extrusion at a temperature of 220 °C. The extrudate will be melt filtered (about 120 microns filtration). Control flake sample A.0 has to be extruded first. Further size reduction before extrusion is acceptable if needed to allow good feeding of the material into the extruder. Nevertheless, the flake size should be kept constant between all samples. See additional information in Table 2.

The extruder has to be cleaned before starting the extrusion process. This involves pulling the screws out of the barrel and then mechanically cleaning them with brass brushes until they reach a glossy finish. The barrel has to be also mechanically cleaned with round brass brushes from the mandrel to the run-out zone.

Table 2: Pellet production purpose & overview

| FLAKE COMPOSITIONS | KG OF BLEND REQUIRED | PURPOSE OF BLEND |
|--|--|--|
| A.0 100% Control flake | Per lab requirement for a 30-minute run time | All tests compared to control values |
| A.25 75% control with 25% innovation | Per lab requirement for a 30-minute run time | Required for comparison to control values |
| A.50 50% control with 50% innovation | Per lab requirement for a 30-minute run time | Required for comparison to control values |
| OPTIONAL A.100 100% innovation | Per lab requirement for a 30-minute run time | Optional, to evaluate the impact of higher concentration of innovation on recycling. |

Procedure:

- Dry samples A.0, A.25 and A.50 (optionally A.100) with a bed desiccant for 1 hour at 80 °C or with hot air at 90 °C for 1 hour.
- Extrude first the sample A.0 (the control blend) at a temperature of 220 °C and with a 120 µm melt filter pack, for no less than 30 minutes.
- Monitor the extrusion process for heat stability.
- If the process doesn't reach steady state conditions (i.e. pressure and/or temperature increase), extrude for no less than 1 hour.
- Rapidly cool the extrudate in a water bath and fed into a pelletizer.
- The pelletizer speed has to be controlled to get a final pellet with a diameter of 3 mm.
- Monitor pressure build-up during pelletizing and report significant differences.
- Randomly collect the pellets to perform all the characterizations reported in Table 3.
- Change the melt filter pack between samples for visual examination.
- Be sure to produce enough pellets for all the tests, including the conversion tests.

RecyClass

Record properties' results in Table 3. The processing conditions used for all the samples must be identical. If some operating conditions have to be modified for A.25 and A.50 (optionally A.100) samples, this information must be documented in the report. A small amount of each sample (50 g) will be retained for RecyClass Technical Committee and the Applicant. The extruded pellets will be tested for pellet properties evaluation (Table 3). The pellets of the test samples will be compared with the pellets of the control sample. All pellets should meet the requirements reported in the Table 3.

If filterability is seen as a potential problem for the innovative samples, a dedicated filter test should be requested by the RecyClass PP Technical Committee.

5.2.3.1 FILTRATION TEST (OPTIONAL)

Filter contamination problems may occur when one of the components in the innovation sample is causing gels, larger particles, or releases degraded particles. Pressure drop has to be monitored during pelletizing since a pressure increase is an indication of the risk of filter contamination. If from previous step, the monitoring of pressure-drop and the visual inspection of the filter after the pelletization induce to further analyse contamination, a dedicated filtration test should be done. To limit the test duration, the innovation sample will not be mixed with control PP.

About 5 kg of pellets from the pure control PP and the pure innovation PP samples will be separately extruded for a minimum of 30 minutes and filtered using a 120 microns screen pack. The 100% control sample has to be extruded for first.

Procedure:

- Dry the control sample before to be extruded with a bed desiccant for 1 hour at 80 °C or with hot air at 90 °C for 1 hours.
- Extrude the sample at a temperature of 220 °C and with a 120 µm melt filter pack, for no less than 30 minutes.
- If the process doesn't reach steady state conditions (i.e. pressure or temperature increase), extrude for no less than 1 hour.
- If required, small changes in the process parameters are admitted keeping the extrusion stable over the time but have to be recorded. However, continuous adjustments of the operating parameters during the runs to overcome steady-state conditions are not admitted.
- Monitor the pressure drop during the test and register variations.
- Repeat the procedure for the innovation sample with the identical operating parameters used for the control sample filtration.

The test is passed if the pressure before the filter does not double from the starting pressure during or at the end of the analysis.

5.2.3.2 PELLET PROPERTIES EVALUATION

Table 3: Pellet properties evaluation

| ASSESSMENT | RESULT | STANDARD | BENCHMARK RECOMMENDATION |
|-----------------------------------|--------|--|---|
| Bulk Density (kg/m ³) | | Annex B of EN 15345 | No less than 480 kg/m ³ |
| Density (kg/m ³) | | ISO 1183-1 | A.25 and A.50 (and eventually A.100 lower than 0,920 g/cm ³ for natural containers and lower than 0,950 g/cm ³ for coloured containers) |
| Melt Index (g/10 min) | | ISO 1133-1 (230 °C/2,16kg) | No more than a 15% delta decrease to A.0 |
| Ash content (%) | | ISO 3451-1 (muffle) or ISO 11358 (TGA) | A.50 lower than 1 wt% (A.100 lower than 2 wt%) |
| Filtration (µm) | | Visual inspection | No build-up on screen |
| Moisture (wt%) | | Moisture analyser | < 0,1 wt% |
| Melt Temperature (°C) | | ISO 11357-3 (Heat-cool-heat cycle at 10°/min from 0°C to 240°C with 5 minutes of isotherm between each ramp) | Melt Temperature second heating < 170°C |
| Impurities | | Visual inspection | Record |
| Surface appearance | | Visual inspection | Record |
| Volatiles (wt%) | | 10 g air-dried pellets exposed to 180°C for 10 minutes | ±0,1 wt% for A.25 and A.50 (and eventually A.100) respect to A.0 |
| PE (%) | | Differential Scanning Calorimetry or Spectroscopic measurement via FTIR microscope in case of doubt | No more than 5% for A.25 and A.50 (and eventually A.100) |
| Delta Pressure (MPa) | | Measure it after extruding through 120 microns for the stable 30 minutes run time | No more than a 10% delta increase to A.0 |
| Variation Delta Pressure (MPa) | | ($\Delta P_{5 \text{ last minutes}} - \Delta P_{5 \text{ first minutes}}$) | No increase higher than 25% compared to start in 30 min |
| Extrusion process | | Unusual sticking, fumes, odour, and any build-up | Record |

5.2.4 INJECTION MOULDING

Pellets A.0, A.25 and A.50 (optionally A.100) have to be tested for injection moulding to evaluate tensile properties, colours, as well as defects.

Control pellets A.0 have to be moulded first.

Procedure:

- Dry the samples A.0, A.25 and A.50 (optional: A.100) at 90 °C for 2 hours.
- Mould sample A.0 at 250-270 °C to multipurpose specimens' type 1A according to EN ISO 527-2 and to plates with measures of about 60 x 60 x 2 mm³.
- The specimens should be completely filled without any shrinkage, overspray, and inclusions.
- Samples A.25 and A.50 (optionally A.100) have to be moulded following the identical operating conditions of the control sample A.0.
- Tag the plates produced by A.0, A.25 and A.50 (optionally A.100) as D.0, D.25 and D.50 (optionally D.100), respectively.
- Small variations in operating conditions could be acceptable but have to be documented in the report.
- For each material monitor the heat stability and the injection pressure.

Record properties' results in Table 4. Mechanical data must be analysed on the 1A specimen, while colour, inclusions and surface should be analysed on the plate. If some operating conditions have to be modified for A.25 and A.50 (optionally A.100) samples, this information must be documented in the report.

5.2.4.1 INJECTION MOULDED PARTS PROPERTIES EVALUATION

Table 4: Injection moulded parts properties evaluation

| ASSESSMENT | RESULT | STANDARD | BENCHMARK RECOMMENDATION |
|---|--------|-------------------|--|
| Flexural Modulus (MPa) | | ISO 178 | Minimum 800 MPa |
| Tensile Stress at Yield (MPa) | | ISO 527 | Minimum 18 MPa |
| Tensile Stress at Break (MPa) | | ISO 527-2 | No more than a 10% delta decrease to A.0 |
| Charpy Impact Strength (kJ/m ²) | | ISO 179-2/1eA | |
| Reflection Colour | | (L*, a*, b*) | Record |
| Surface appearance | | Visual inspection | No black specks |
| Inclusions of extraneous material | | Visual inspection | Record |

5.3 CONVERTING

Based on the obtained results, the RecyClass PP Technical Committee will decide if the innovation presents some critical properties. On that basis, the Technical Committee reserves the right to further test the innovation. Otherwise, if the results are aligned with PP recyclate specimens the Technical Committee and the Applicant will define the way to further test the innovation on the base of the main applications available on the market.

The Protocol aims to assess the highest value recyclate application. The converting process should be same as production process of each innovation product, (1) blow moulding bottle, (2) extrusion sheet, (3) Injection moulding. For example, if innovation product is made by injection moulding, the converting test also should be done by injection moulding and not blow moulding, because PP resin for injection moulding is not suitable for extrusion blow moulding due to its high MFI. However, the RecyClass PP Technical Committee according with the Applicant could decide to test the innovation for a different application.

In case of bottles or sheets production, three blends of innovation and control pellets will be produced aiming to assess different innovation concentration in the recycling stream, as following reported. This step will be skipped in case of injection moulding. It means that the pellets will be tested as it is without any dilution with virgin material (cf. section 5.2.4.).

5.3.1 PELLET BLENDS PREPARATION

Once PP pellets have been produced and tested, three additional blends of 50% virgin – 50% blend A shall be produced for converting tests. Keep separated the pellet samples previously produced and dry them for 10 minutes at 60°C. Then according to the values reported in following Table 5 prepare three different blends with 0% innovation (50% virgin and 50% A.0 pellets), 12,5% innovation (50% virgin and 50% A.25 pellets), and 25% innovation (50% virgin and 50% A.50 pellets), and tag them as samples B.0, B.25 and B.50 respectively.

Eventually, depending on the application and its market penetration, the TC can ask the Applicant also to perform the tests with a sample of 50% virgin and 50% innovation (i.e. B.100, by replacing the test with B.25).

5.3.2 PELLET BLENDS COMPOSITION

Three different blends at 50% virgin pellet – 50% Blend A shall be produced as described in table 4. Blends will be composed of 0%, 12,5% and 25% content (end eventually 50%) by weight of the initial innovation PP container.

Table 5: Pellet blends composition for the application tests

| BLEND | COMPOSITION | % VIRGIN RESIN | EFFECTIVE % CONTROL | EFFECTIVE % INNOVATION |
|---------------------------|--------------------------------|----------------|---------------------|------------------------|
| B.0 | 50% Virgin Pellet 50% A.0 | 50 | 50 | 0 |
| B.25 | 50% Virgin Pellet 50% A.25 | 50 | 37,5 | 12,5 |
| B.50 | 50% Virgin Pellet 50% A.50 | 50 | 25 | 25 |
| OPTIONAL B.100 | 50% Virgin Pellet 50% A.100 | 50 | 0 | 50 |

5.3.3 BOTTLES BLOW MOULDING

In case, bottles blow moulding have been chosen by the RecyClass PP Technical Committee and the Applicant as converting step to assess the highest value recycle application, the following procedure must be applied.

Control blend B.0 has to be moulded first.

Table 6: Bottle production purpose & overview

| PELLET COMPOSITIONS | KG OF BLEND REQUIRED | PURPOSE OF BLEND |
|--|--|--|
| B.0 50% A.0 pellet and 50% Virgin pellet | Per lab requirement for a 30-minute run time | All tests compared to control values |
| B.25 50% A.25 pellet and 50% Virgin pellet | Per lab requirement for a 30-minute run time | Required for comparison to control values |
| B.50 50% A.50 pellet and 50% Virgin pellet | Per lab requirement for a 30-minute run time | Required for comparison to control values |
| OPTIONAL B.100 50% A.100 pellet and 50% Virgin pellet | Per lab requirement for a 30-minute run time | Optional, to evaluate the impact of higher concentration of innovation on recycling. |

Procedure:

- The samples B.0, B.25 and B.50 (optionally B.100) should be blow moulded at 190-210 °C into one litre laundry detergent bottle, 1 mm tick.
- The characteristics of the bottle must be the following ones:
 - Cross section: Rectangular, square, or circular.
 - The bottom corners should have radii as small as commercial laundry detergent bottles.
 - Bottle height should be typically for one litre laundry detergent bottle.
 - Neck may be offset
 - The bottle must weigh 50± 2 grams.
- The bottle must weigh 50 ± 2 grams.
- Samples B.25 and B.50 (optionally B.100) have to be blown following the identical operating conditions of the control sample B.0.
- Small variations in operating conditions could be acceptable but have to be documented in the report.

Record properties' results in Table 7. If some operating conditions have to be modified for B.25 and B.50 samples, this information must be documented in the report.

5.3.3.1 BOTTLE PROPERTIES EVALUATION

Table 7: Bottle properties evaluation

| ASSESSMENT | RESULTS | STANDARDS | BENCHMARK RECOMMENDATION |
|------------------------|---------|---|--|
| Bottle Appearance | | Visual defects including surface roughness | Minimum of 10 bottles (compare with B.0) |
| Bottle Integrity | | Visual inspection | |
| Bottle Dimension (mm) | | Height | ±2% to B.0 |
| Bottle Weight (g) | | Weight | |
| Bottle Capacity (mL) | | Brim-full | |
| Thickness (mm) | | Top, mid, and bottom side wall, shoulder, base corner | Minimum 0,3mm for each measure |
| Top load (kg) | | ASTM D2659 (no ISO available) | No more than a 10% delta decrease to B.0 |
| Drop impact (m) | | ASTM D2463, procedure B (no ISO available) | |
| Flexural Modulus (MPa) | | ISO 178 | Minimum 800 MPa |
| Additional observation | | Deposit on tooling | None observed respect to B.0 for 2 hours bottle production |

5.3.3.2 TENSILE PROPERTIES TESTING

Tensile properties have to be tested for bottle application to minimize the influence of a subsequent processing and obtain a more realistic comparison. Tensile properties should be evaluated on multipurpose specimens' type 1A according to EN ISO 527-2 that were punched from the side wall of the bottles in the vertical direction.

Table 8: Bottle tensile properties evaluation

| ASSESSMENT | RESULTS | STANDARDS | BENCHMARK RECOMMENDATION |
|-------------------------|---------|-----------|--|
| Stress at Yield (MPa) | | ISO 527-2 | No more than a 25% delta decrease to B.0 |
| Stress at Break (MPa) | | ISO 527-2 | |
| Elongation at Yield (%) | | ISO 527-2 | |

5.3.4 SHEET EXTRUSION

On the base of results obtained by pellet characterization, the RecyClass PP Technical Committee and the Applicant can optionally decide to test the innovation for sheet extrusion.

As reported in the section 5.3.1, prepare three different blends with 0% innovation (50% virgin and 50% A.0 pellets), 12.5% innovation (50% virgin and 50% A.25 pellets), and 25% innovation (50% virgin and 50% A.50 pellets). Tag them as C.0, C.25 and C.50, respectively.

Eventually, depending on the application and its market penetration, the TC can ask the Applicant also to perform the tests with a sample of 50% virgin and 50% innovation (i.e. C.100, by replacing the test with C.25).

Control pellet blend C.0 has to be extruded first. See more information in Table 9.

Table 9: Sheet production purpose & overview

| PELLET COMPOSITIONS | KG OF BLEND REQUIRED | PURPOSE OF BLEND |
|--|--|--|
| C.0 50% A.0 pellet and 50% Virgin pellet | Per lab requirement for a 30-minute run time | All tests compared to control values |
| C.25 50% A.25 pellet and 50% Virgin pellet | Per lab requirement for a 30-minute run time | Required for comparison to control values |
| C.50 50% A.50 pellet and 50% Virgin pellet | Per lab requirement for a 30-minute run time | Required for comparison to control values |
| OPTIONAL C.100 50% A.100 pellet and 50% Virgin pellet | Per lab requirement for a 30-minute run time | Optional, to evaluate the impact of higher concentration of innovation on recycling. |

Procedure:

- Dry samples C.0, C.25 and C.50 (optionally C.100) at 90°C for 2 hours.
- Extrude sheets at 220°C with thickness of 1000 µm under conditions determined for the control sample C.0.
- Extrusion run time per variable, no less than 30 minutes.
- Samples C.25 and C.50 (optionally C.100) have to be extruded following the identical operating conditions of the control sample C.0.
- Small variations in operating conditions could be acceptable but have to be documented in the report.

Record properties' results in Table 10. If some operating conditions have to be modified for C.25 and C.50 samples, this information must be documented in the report.

5.3.4.1 SHEET PROPERTIES EVALUATION

Table 10: Sheet properties evaluation

| ASSESSMENT | RESULTS | STANDARDS | BENCHMARK RECOMMENDATION |
|--------------------------------------|---------|-------------------|--|
| Flexural Modulus (MPa) | | ISO 178 | Minimum 800 MPa |
| Tensile Stress at Yield (TD*) (MPa) | | ISO 527 | ± 10% to C.0 |
| Tensile Stress at Yield (MD**) (MPa) | | ISO 527 | |
| Tensile Stress at Break (TD*) (MPa) | | ISO 527 | No more than a 10% delta decrease to C.0 |
| Tensile Stress at Break (MD**) (MPa) | | ISO 527 | |
| Colour | | Visual inspection | No discolouration |
| Surface Appearance | | Visual inspection | No black specks |
| Inclusions of extraneous material | | Visual inspection | Record |

*TD: transverse direction

**MD: machine direction

DOCUMENT VERSION HISTORY

| VERSION | PUBLICATION DATE | REVISION NOTES |
|----------------|-------------------------|---|
| 1.0 | June 2020 | Recyclability Evaluation Protocol for PP Containers release |
| 2.0 | May 2021 | Major modifications about procedure, wording & template |
| 3.0 | January 2022 | Revised wording and removal of some testing |

ANNEX I – CONTROL SAMPLES SELECTION

| PP RESINS | APPLICATIONS | DENSITY, g/cm ³ | MFI at 230° C / 2,16 kg, g/10min | FLEXURAL MODULUS, MPa | CHARPY IMPACT STRENGTH, KJ/m ² |
|-----------|---|----------------------------|----------------------------------|-----------------------|---|
| RB206MO | Bottles (Food, cosmetics) | 0,905 | 1,9 | 1100 | 7 |
| BB125MO | Bottles (industrial chemicals) | 0,905 | 1,3 | 1200 | 50 |
| RB307MO | Containers (detergents, cleaners, chemicals, oil) | 0,905 | 1,5 | 850 | 20 |
| HC205TF | Thermoforming (trays, cap, container) | 0,905 | 4 | 1700 | 5 |
| BH345MO | Thin wall packaging | 0,905 | 45 | 1300 | 6 |

RecyClass

c/o Plastic Recyclers Europe
Avenue de Broqueville 12
1150 Brussels - Belgium

Phone : +32 2 786 39 08
info@recyclclass.eu

www.recyclclass.eu