


# RecyClass

A graphic consisting of three thick, light blue curved arrows arranged in a circular pattern, pointing clockwise. The arrows are positioned on the left side of the slide, partially overlapping the 'RecyClass' text and the 'PLASTIC FUTURE IS CIRCULAR' box.

PLASTIC FUTURE IS  
CIRCULAR

# RecyClass

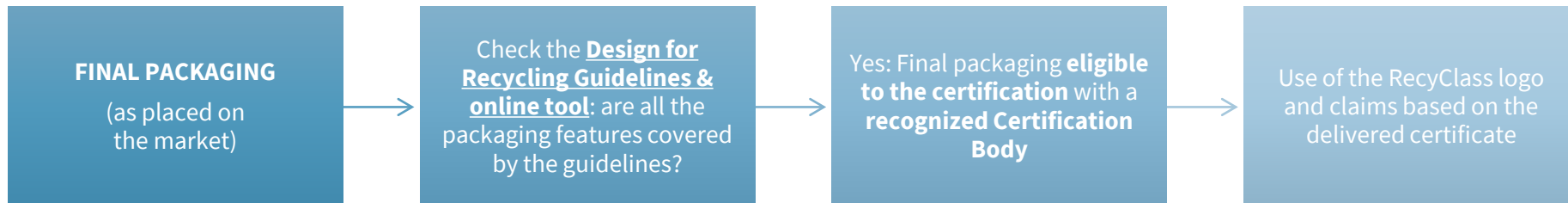
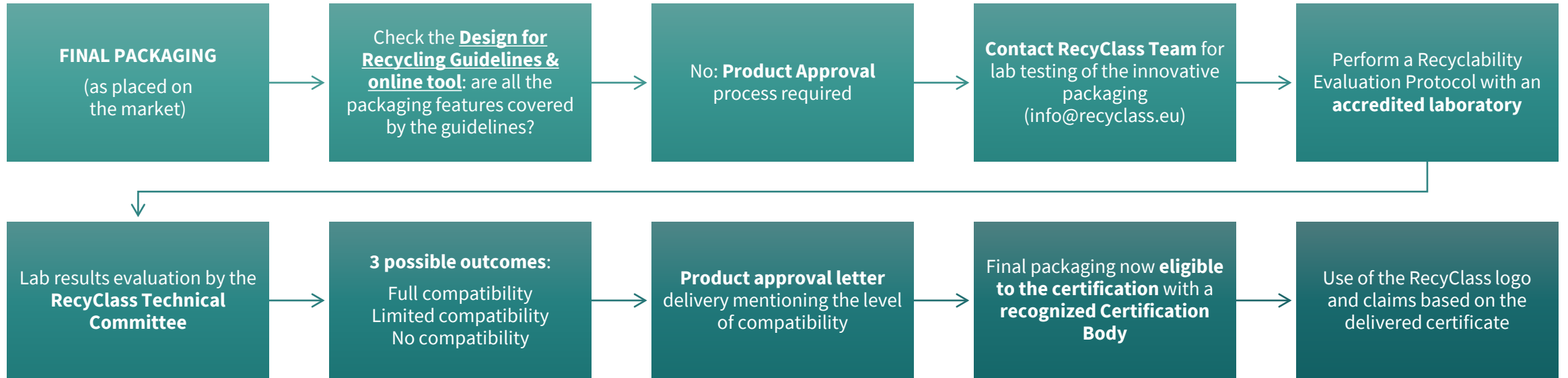


RECYCLABILITY  
ASSESSMENTS –  
BROCHURE 2021

DESIGN MATTERS!

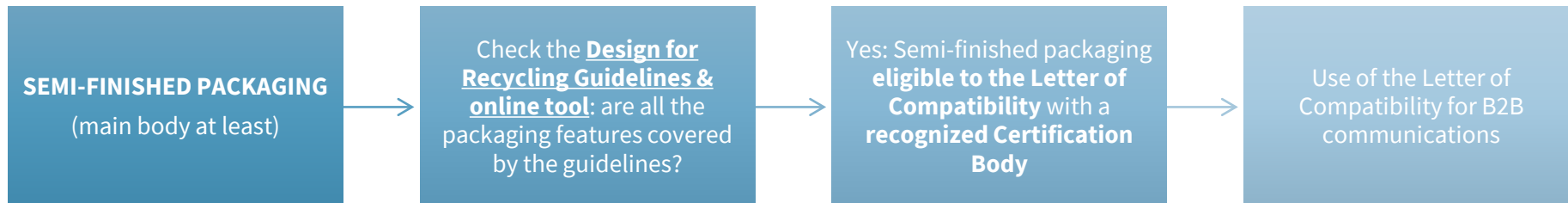
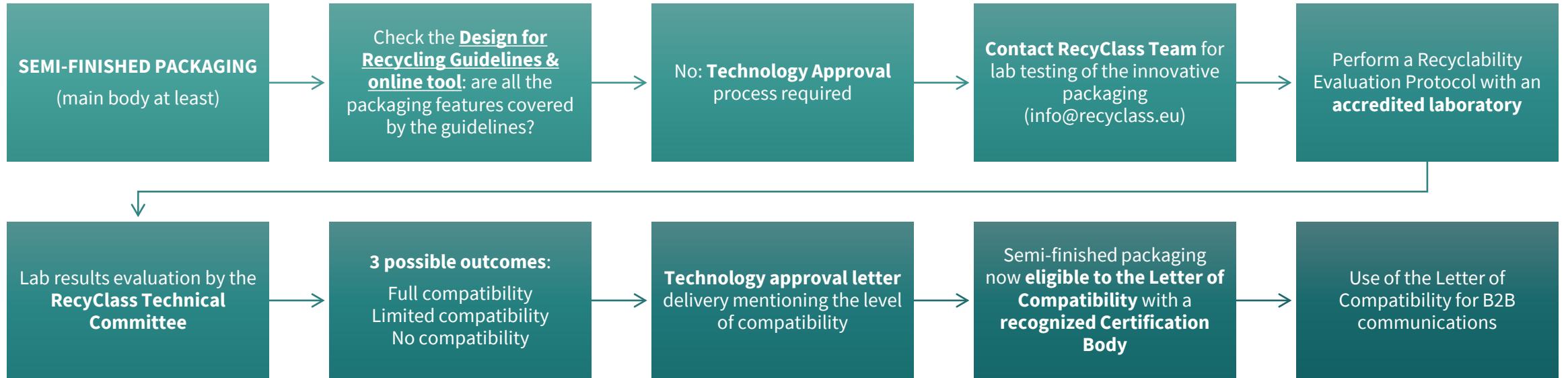
# RecyClass

## RECYCLABILITY ASSESSMENTS FINAL PACKAGING



# RecyClass

## RECYCLABILITY ASSESSMENTS SEMI-FINISHED PACKAGING



# RecyClass | TECHNOLOGY & PRODUCT APPROVAL

## SCOPE

- **Innovative** packaging
- Recyclability Evaluation Protocol
- Sorting behaviour verification<sup>1</sup>

## EXAMINER

- RecyClass members participating to the Technical Committees' (under NDA)

## COST & TIMING

- About 12k€ for lab test (refer to accredited labs) and 2 500€ RecyClass fee<sup>2</sup>
- About 4 to 5 months

## RESULTS

- Assessment of the product or technology's compatibility with the specific recycling stream (delivery of an approval letter<sup>3</sup>)

<sup>1</sup> A sorting test may be requested by the Technical Committee if the packaging contains feature(s) known to mislead the sorting. The misleading features are listed in the [RecyClass Recyclability Methodology](#).

<sup>2</sup> The fee covers administration and data managements costs. RecyClass offers one fee per year to their platinum members.

<sup>3</sup> Approved products are eligible for the Recyclability Certifications (cf: slide 5) and approved technologies for the Letter of Compatibility (cf: slide 6).



Please contact RecyClass to assess your innovative packaging. Approval procedures, approved technologies and products are published on RecyClass website.

# RecyClass | RECYCLABILITY CERTIFICATIONS

## SCOPE

- **Final** packaging
- Design for Recycling and Sorting behaviour
- Local collection, sorting, and recycling infrastructures<sup>1</sup>

## EXAMINER

- External recognized Certification Body chosen by the applicant (under NDA)

## COST & TIMING

- 800€ to 1k€ per certificate (depends on the CB) and 150€ fee<sup>2</sup>
- About 2 months (depends on the CB)
- Additional costs and time if tests are required<sup>3</sup>

## RESULTS

- RecyClass Recyclability Certificate, logos and endorsed claims<sup>4</sup>
- Class ranking, sorting behaviour, Recyclability Rate<sup>1</sup> and country-specific information<sup>1</sup>

<sup>1</sup> Only for the Recyclability Rate Certification (quantitative assessment).

<sup>2</sup> The fee covers administration and data managements costs. RecyClass fee of 150€ is for the first 30 certificates from the same Applicant and 100€ as from the 31<sup>st</sup> certification. Please note that some fees are included per year for the RecyClass members.

<sup>3</sup> Required by the auditor during the audit to complete the information and the report (e.g., sorting test, washing test for label and adhesive).

<sup>4</sup> Following the [Recyclability & Recycled Content Use of Claims Guidance](#) document.

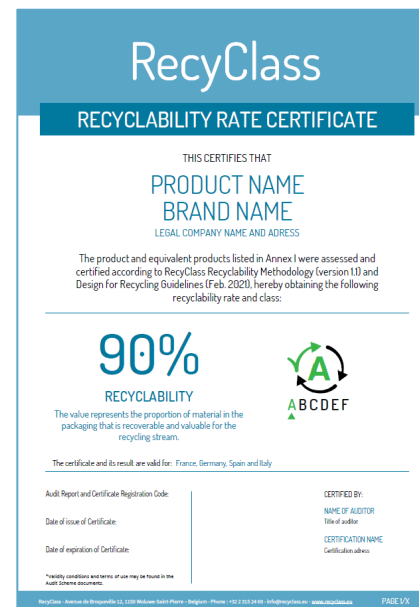


More information & list of auditors available [here](#). Please contact one the recognized Certification Bodies to get certified.



## DESIGN FOR RECYCLING ASSESSMENT

- Class ranking from A to F
- Recycling stream of the packaging assessed
- Use of the RecyClass logo<sup>1</sup>
- Endorsement of recyclability claims<sup>1</sup> by RecyClass



## RECYCLABILITY RATE ASSESSMENT

- Class ranking from A to F
- Recyclability rate from 0 to 100%
- Recycling stream of the packaging assessed
- Countries where the packaging is collected and sorted for recycling
- Use of the RecyClass logo<sup>1</sup>
- Endorsement of recyclability claims<sup>1</sup> by RecyClass



[Detailed information online](#)

1. According to the *Use of Claims Guidance & Logo Use Guidelines* document (NB: the rate assessment will lead to additional claims.)

# RecyClass | LETTER OF COMPATIBILITY

## SCOPE

- **Semi-finished** packaging
- Evaluation of the design for Recycling and Sorting behaviour

## EXAMINER

- External recognized Certification Body chosen by the applicant (under NDA)

## COST & TIMING

- 800€ to 1k€ per letter (depends on the CB) and 150€ fee<sup>1</sup>
- About 2 months (depends on the CB)
- Additional costs and time if tests are required<sup>2</sup>

## RESULTS

- Letter of Compatibility for B2B communications<sup>3</sup>
- Intermediate class ranking and sorting behaviour

<sup>1</sup>The fee covers administration and data managements costs. RecyClass fee of 150€ is for the first 30 Letters of Compatibility from the same Applicant and 100€ as from the 31<sup>st</sup> letter. Please note that some fees are included per year for the RecyClass members.

<sup>2</sup> Required by the auditor during the audit to complete the information and the report (e.g., sorting test, washing test for label and adhesive).

<sup>3</sup> Following the [Recyclability & Recycled Content Use of Claims Guidance](#) document.



More information & list of auditors available [here](#). Please contact one the recognized Certification Bodies to get assessed.





## Letter of Compatibility

- Intermediate class ranking from A to F
- Recycling stream of the semi-finished packaging assessed
- Use of the letter for B2B communications<sup>1</sup> to promote the recyclability of the technology
- Mainly addressed to converters & semi-finished packaging manufacturers
- Evaluation audit reports the missing features for the next actors of the value chain



# RecyClass

THANK YOU FOR  
YOUR SUPPORT

c/o Plastics Recyclers Europe  
Avenue de Broqueville 12  
1150 Brussels – Belgium

Phone: +32 2 786 39 08  
info@recyclclass.eu

[www.recyclclass.eu](http://www.recyclclass.eu)

A graphic consisting of four thick, light blue curved arrows arranged in a circle, pointing clockwise. The arrows are positioned around the central text, creating a circular flow effect.

# RecyClass

PLASTICS FUTURE IS CIRCULAR